

Videolink NVR Manual

- 1, Unpack, load the HDD, connect the power adapter and monitor, and then turn it on.
- 2, After successful startup, enter the login interface, as shown in the figure:



Input user:admin, Default password is empty, click ok login NVR

- 3, Right click on the preview interface and a drop-down menu will appear, as shown in the figure

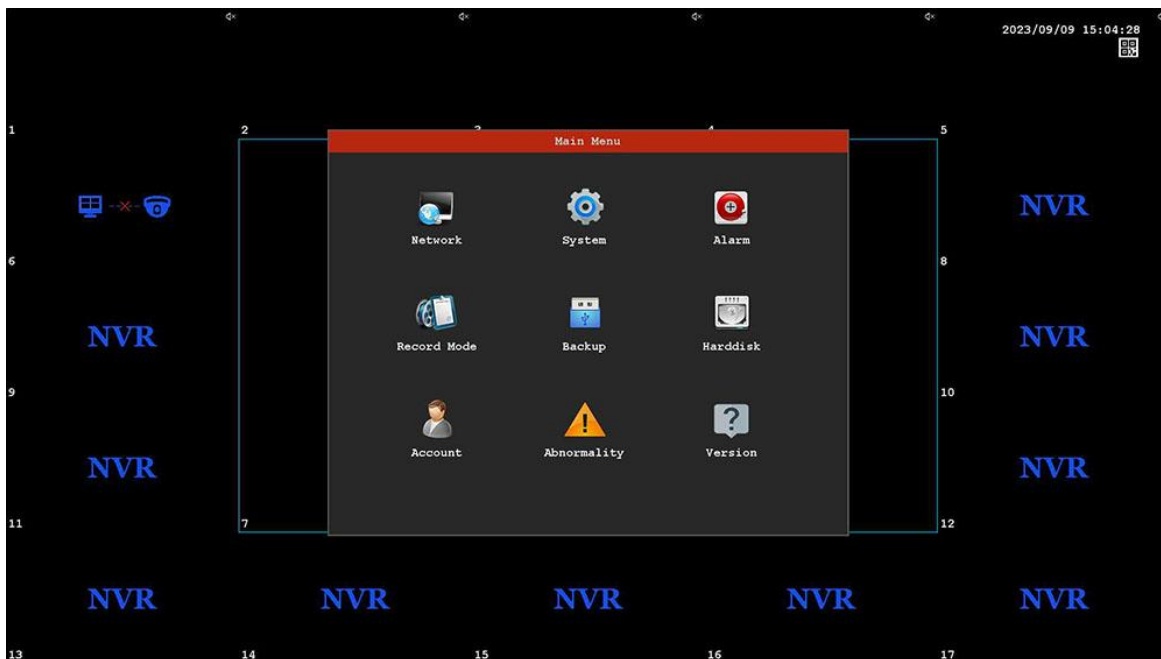


- 1) Channels Config



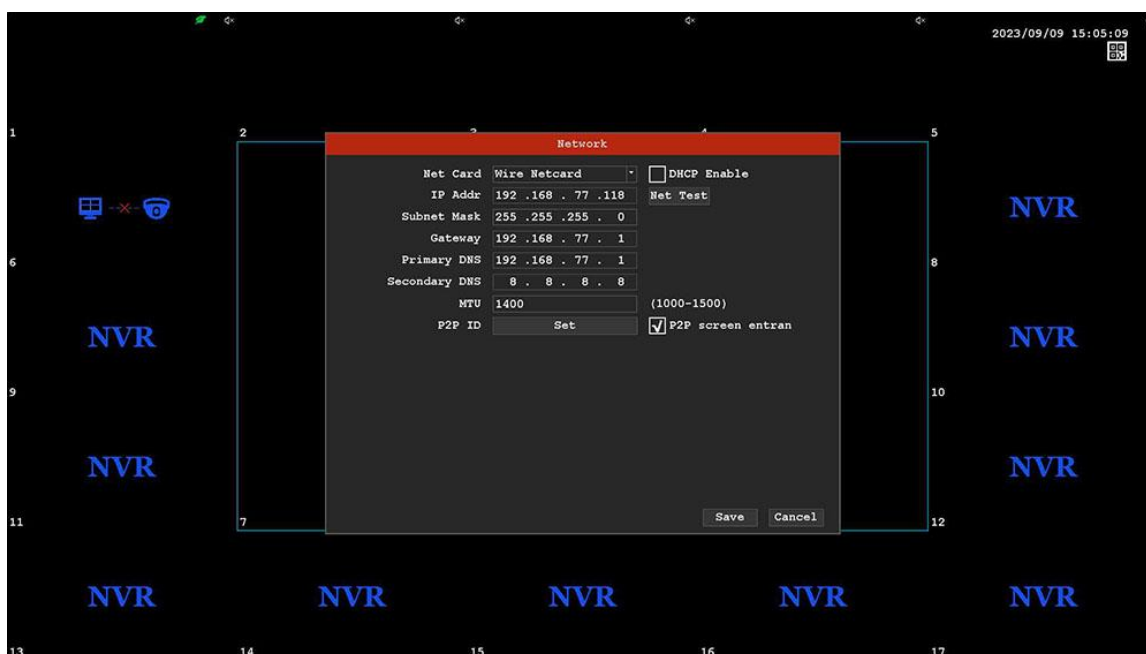
Click the "Refresh" button to search for a camera, then select the camera and click the "ADD" button to add the camera to the NVR. Please pay attention to the username and password of the camera.

- 2),Main Menu

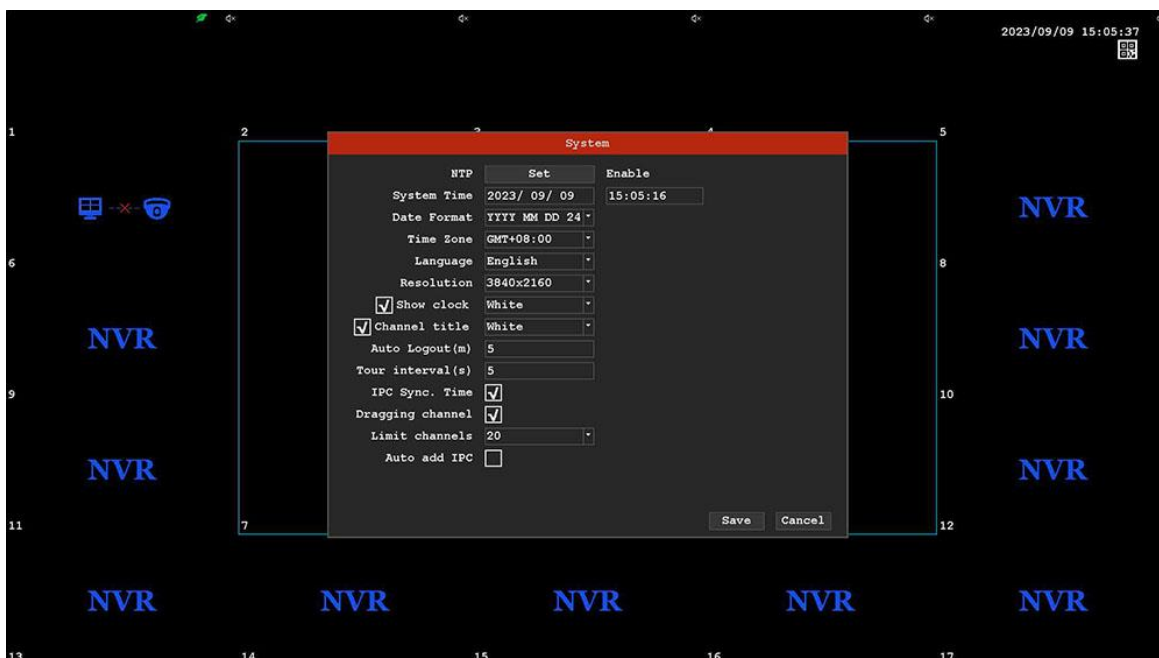


You can set network parameters, system information, alarms, Record Model, Backup, Harddisk, Account, Abnormality and version information here

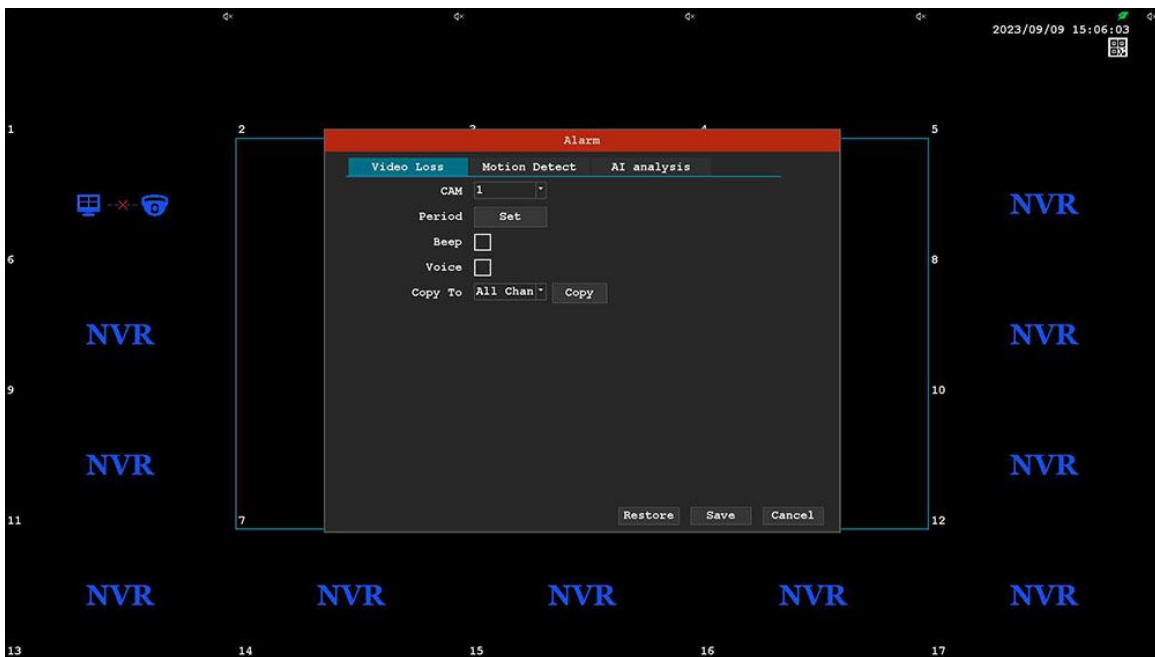
A, Network: Here, you can set the network parameters of the camera



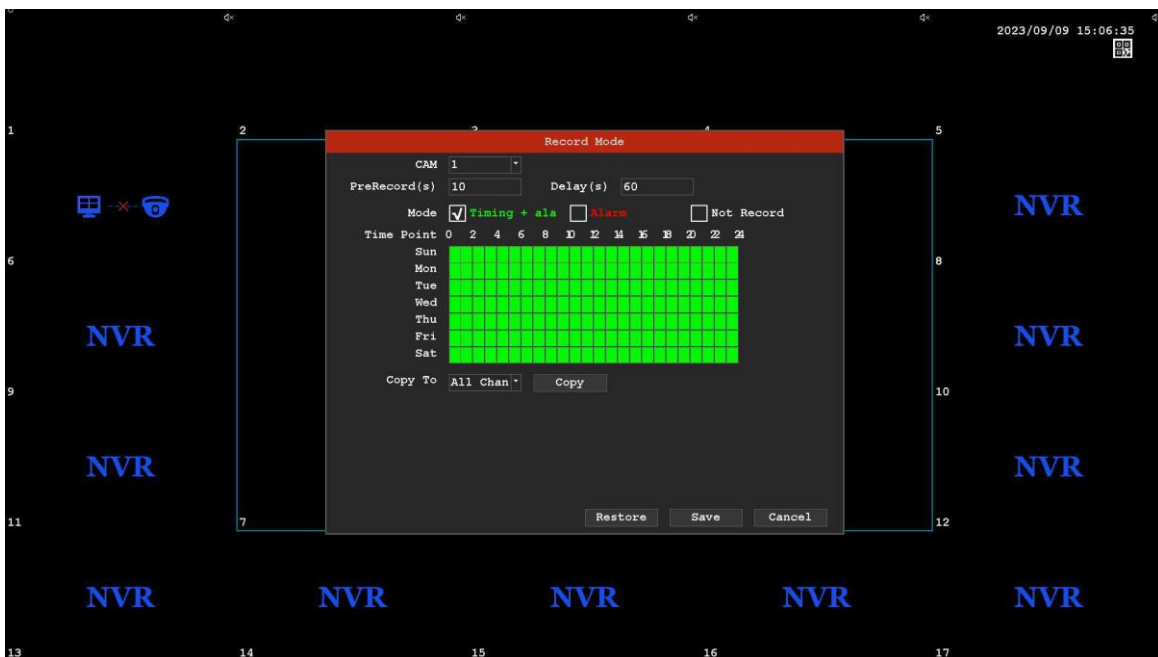
B, System: Set the camera system, including information such as time, language, resolution, etc



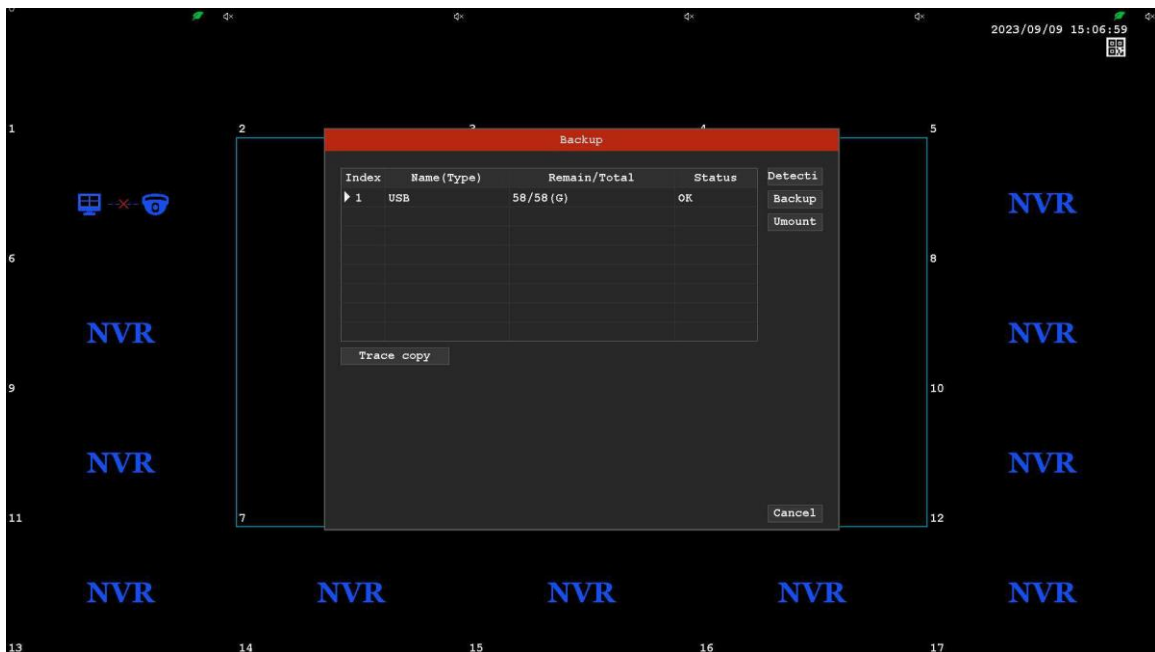
C, Alarm settings: Set alarm triggering



D, Recording mode: Recording conditions can be set for each channel



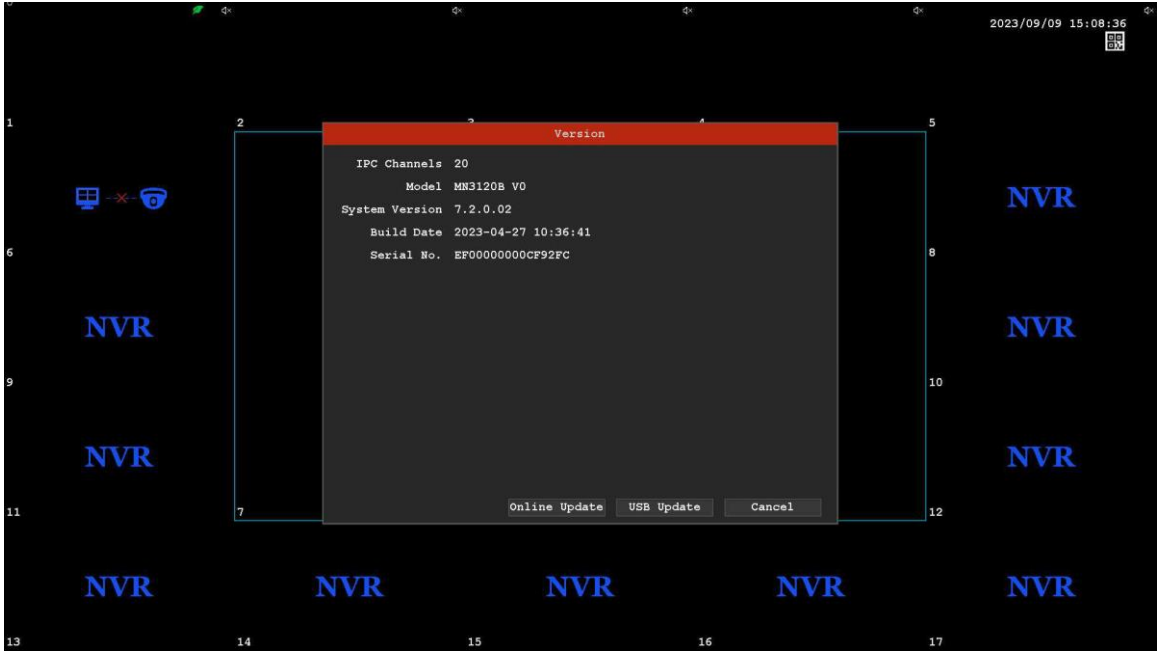
E, Backup: NVR video files can be backed up to a USB drive



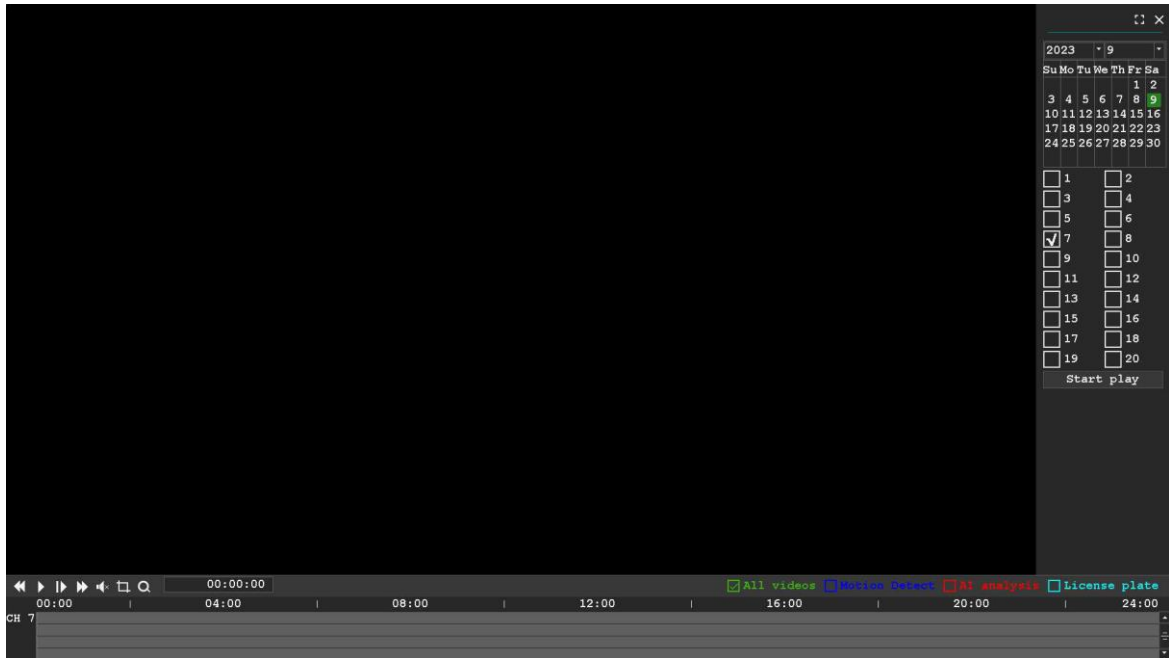
F, Account: You can add, modify, and delete account information, and support permission settings



G, NVR version information

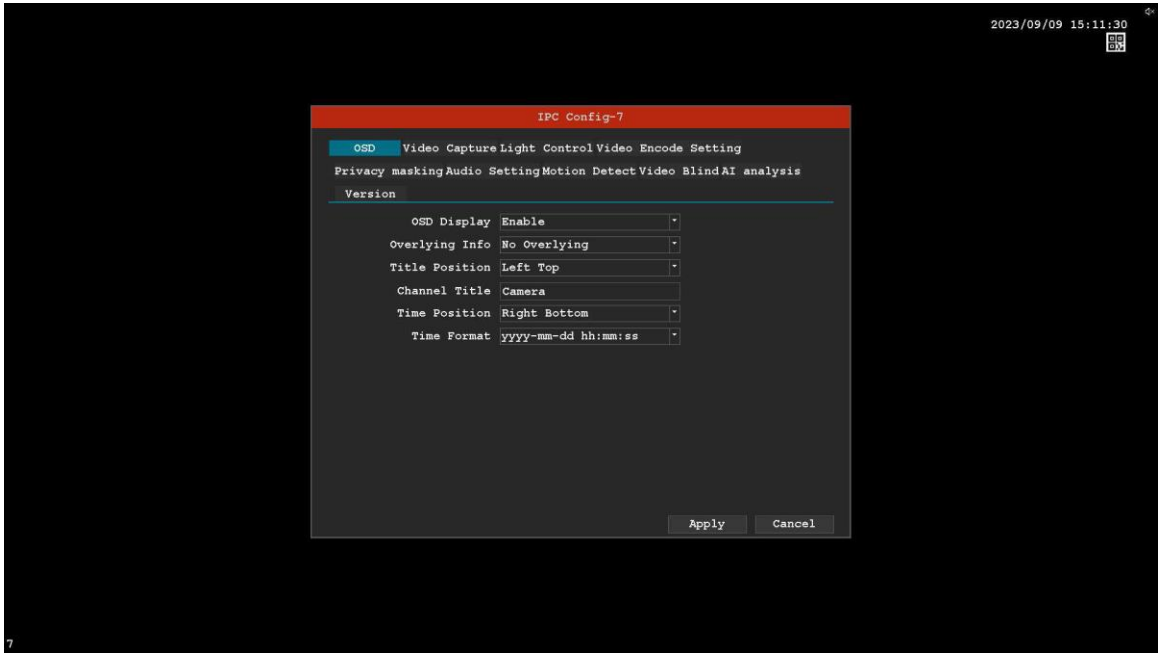


3) Playback: Playback the recorded videos of each channel on NVR and support download function



4) IP configuration: Configurable camera parameters

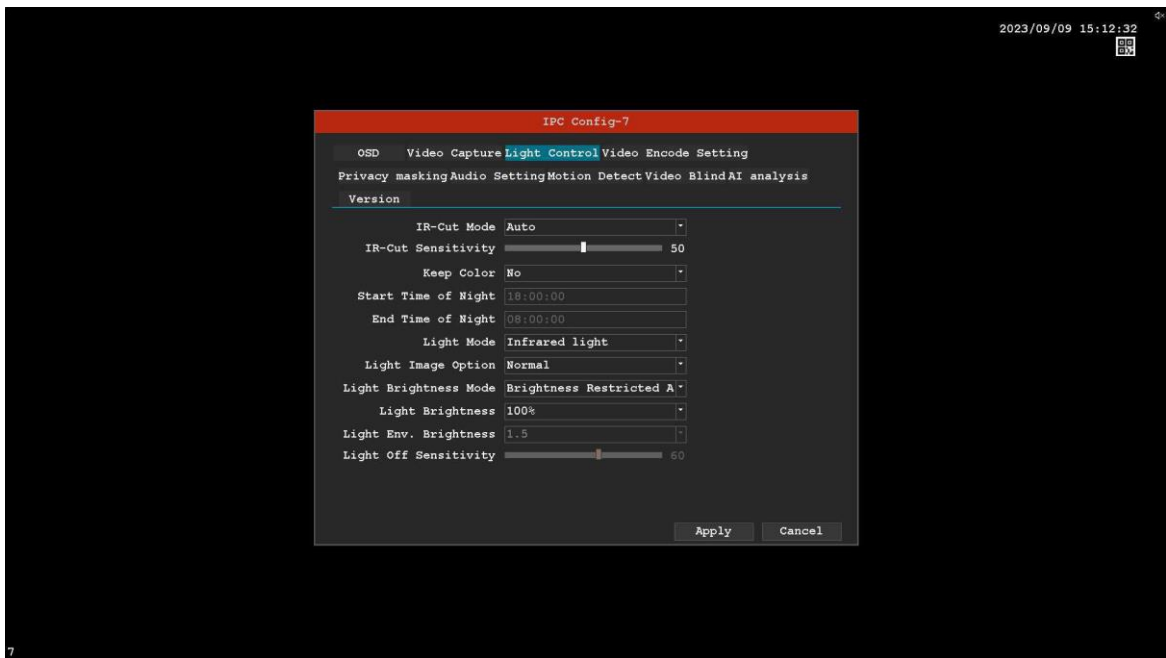
A,OSD: The camera can be configured to display information on the specified channel's OSD



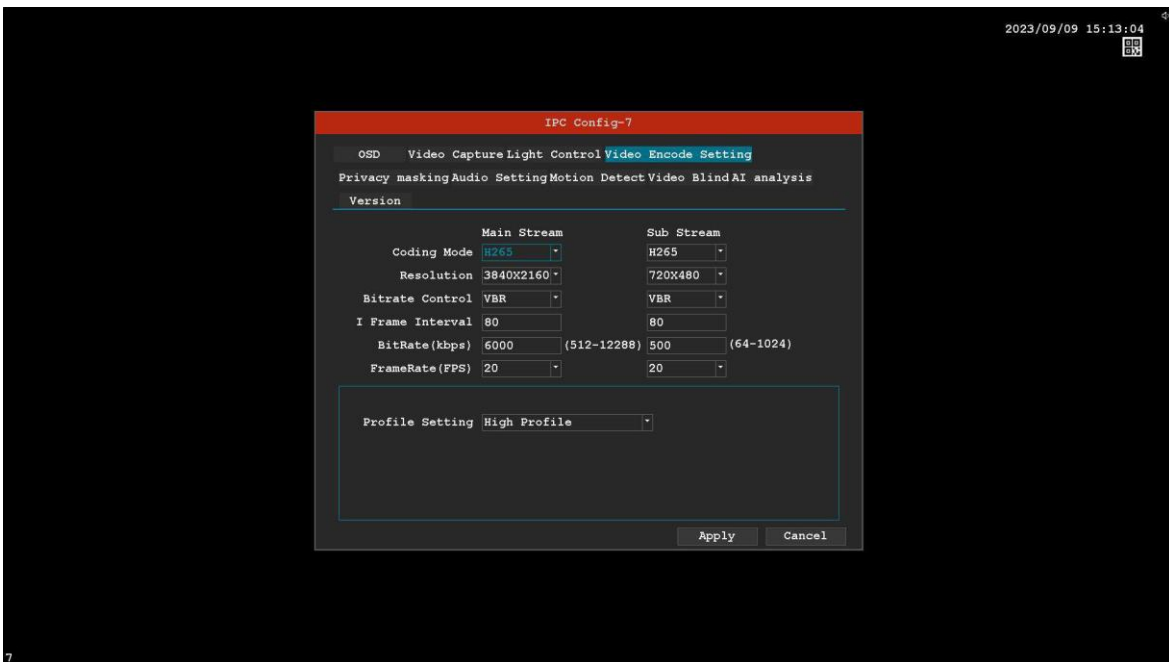
B,Video Capture: Configurable camera image parameters



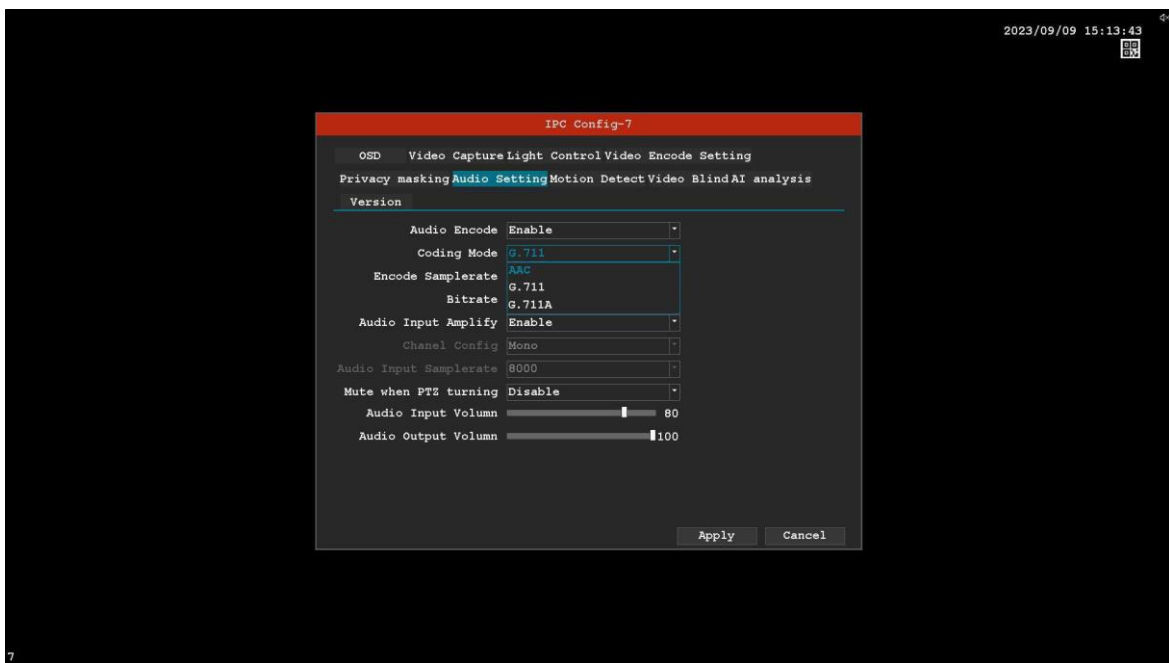
C,Light control: Camera lighting setting



D, Video Encode setting



E, Audio setting



F, AI setting

